

staron[®]
Solid Surfaces

LOTTE CHEMICAL (THAILAND) CO., LTD.

1 Empire Tower, RM 2313, 23rd Floor,
South Sathorn Rd, Yannawa, Sathorn, Bangkok 10120, Thailand
Tel. +66-2-624-6730

Copyright © 2021 LOTTE CHEMICAL Co., Ltd.
Printed in KOREA

STARON

Solid Surfaces
www.Staron.com

staron[®]
Solid Surfaces



STRETCH YOUR IMAGINATION TO EXPERIENCE THE POSSIBILITIES WITH STARON.

WHY STARON ?

Staron® solid surface materials boast dimensional flexibility and low maintenance and is ideal for a multitude of interior applications. Comprised of a wide range of color and pattern options, Staron® is non-porous, ultra-hygienic and ultimately durable. The Tempest and Supreme collections offer high-transparent gemstone textures and elegant, refined vein patterns like natural marble.



RELIABLE PERFORMANCE

- Cutting-edge technology sets a new standard in surface
- Able to be inconspicuously repaired due to its homogenous composition



HYGIENIC SURFACE

- Non-porous surface inhibits growth of mold and bacteria
- Resistant to heat and abrasion
- Able to refurbish to a new condition



DIMENSIONAL FLEXIBILITY

- Thermo-formable into three-dimensional shapes
- Excellent workability enables virtually unlimited design possibilities



INFINITE RANGE OF COLORS

- Over 150 color options ranging from natural to vivid
- Ongoing collaboration with color trend experts keeps Staron commercially relevant



IMPERCEPTIBLE SEAMS

- Consistent color and texture on every sheet provides a smooth and seamless surface
- Installed without gaps, crevices, or obvious joint-lines



TRANSLUCENCY

- Creative back-lighting effects created by altering the thickness of the material to allow transmission from a low-energy light source



GLOBAL NETWORK

- Regional branch offices and product distribution networks worldwide



RELIABLE QUALITY

- Advanced quality control policy and a commercial 10-year warranty
- Certified eco-friendly by Greenguard and Scientific Certification System

NEW
Supreme

INTIMATE MOMENTS

Translucent / Mystical / Organic Pattern

The upgraded Supreme III is inspired by marble that have unexpected movements and cracks of nature formed by long-enduring harsh natural conditions. The vein conveys a sense of depth by the effects of reflection, refraction, and overlay through light. The lighting transmission effect relieves people's anxiety and isolation by providing emotional stability. Depending on the presence or absence of lighting, three types of interpretation are possible, so it can be used not only for countertops but also as wall-claddings.

Enjoy our three new fabulous decors in the Supreme III series;

Arctic White with marble-like veins on subtle white and

Rotor Cloud that stands out with the harmony of tinted grey and bold white veins.

Latte Cream like the dawn of winter, laid down onto the color of the vast lands

NEW
Supreme



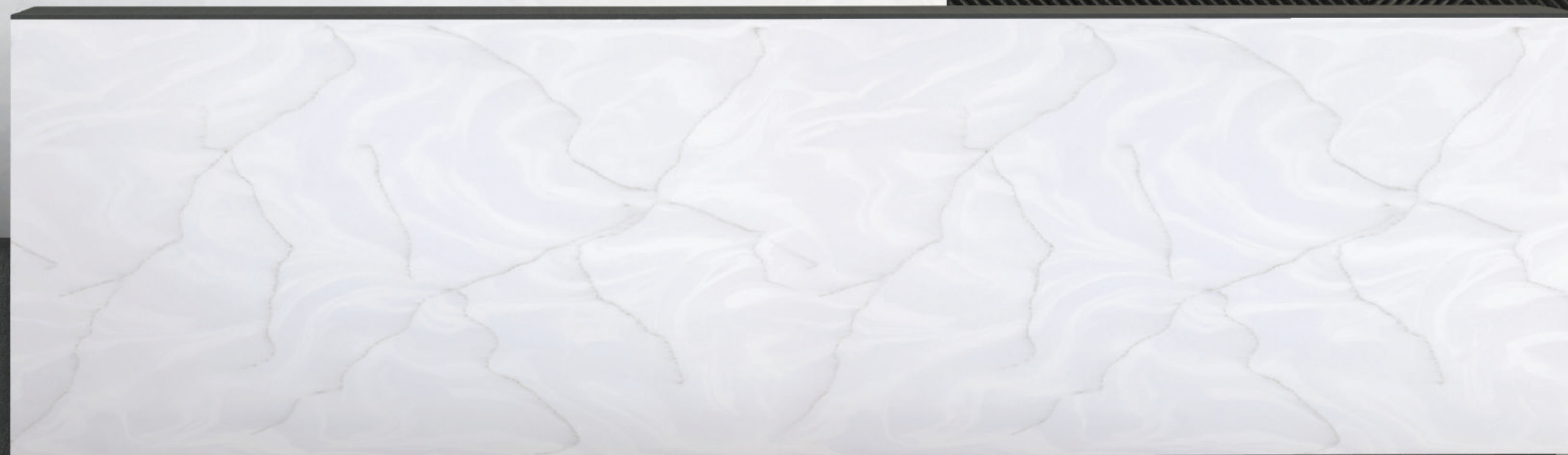
Arctic White VA311



Rotor Cloud VR322



Latte Cream VL343





Cotton White



Cotton White VC110



Morning Sky VM114

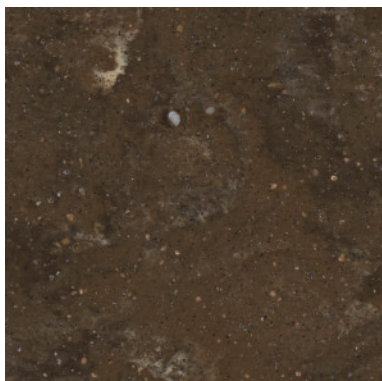


Beige Granite VB172

Supreme



Dandelion VD175



Loam VL155



Magnolia VM143



Beige Granite VB172



Dandelion

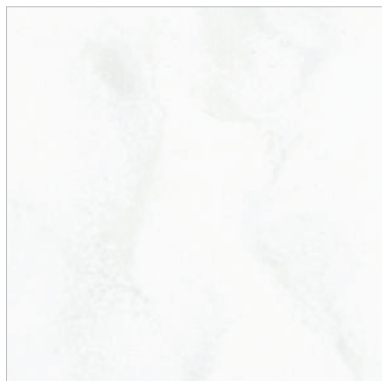
Supreme



Cloudbank VC118



Ocean View VO171



Delphi VD111



Ocean View

Supreme



Dawn VD126



Urban Grey VU127



Ash Concrete VA129

Ash Concrete

Supreme



Flux VF113



Natural Bridge VN144



Flux

Supreme



Tranquil VT115

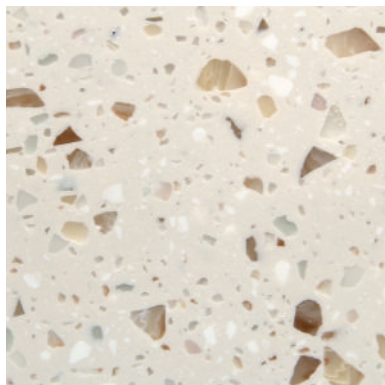


Reno VR184

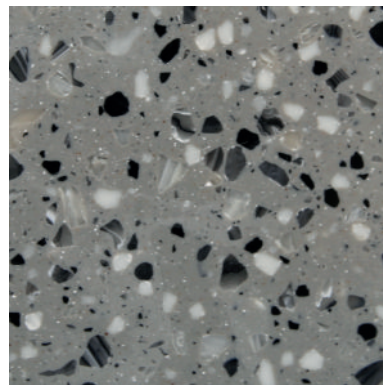


Noir Concrete VN180

Terrazzo
Collection



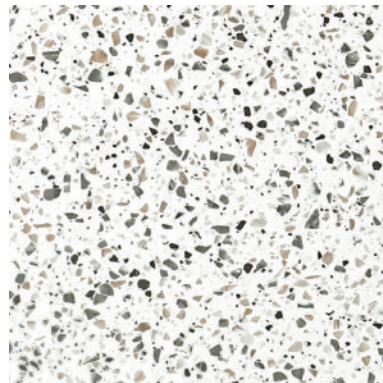
Terrazzo Bologna
NT970



Terrazzo Torino
NT981



Terrazzo Como
FT191



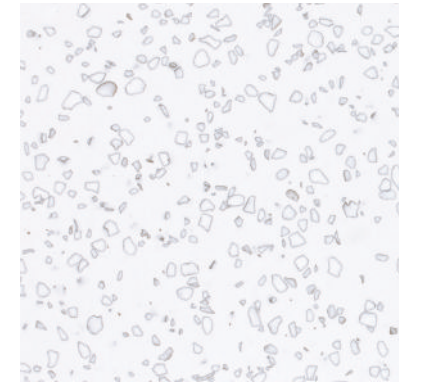
Terrazzo Venezia
NT150



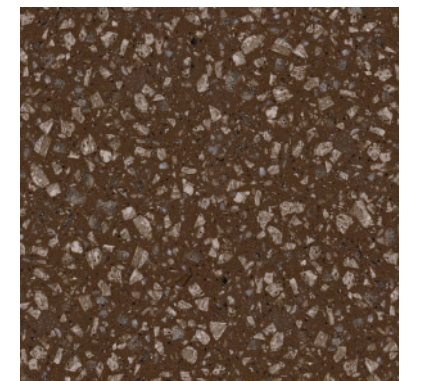
Terrazzo Venezia



Mosaic Dalmatian



Mosaic Dalmatian QD212



Earthen Bark QL257



Mosaic Nimbus Qn287

NEW
Solid

COLOR HEALING

Distinct / Optimistic / Energizing

Color conveys simple yet powerful messages, and it contains numerous emotions. Intense colors communicate rich sensibility as well as lively and friendly atmosphere full of positive energy. These refreshing colors inspired by nature can be expected to have greater effects when harmonized with the existing STARON colors in various commercial spaces.

Ultramarine

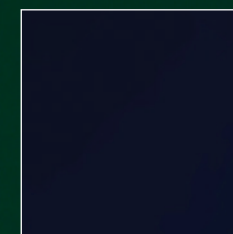
brings tranquility and comfort to people with its positive color soothing effect. Blue energizes the space and at the same time calms the mind, giving a sense of comfort and relief.

Forest

is a vivid mint color with a hint of bluish green. It carries a pleasant, modern and outgoing mood. The positive energy of Forest gives life to the space and helps alleviate people's anxiety and depression, since it inherits healing aspects.

Piano Black

is a vivid black with an elegant, sophisticated and modern mood that can emphasize the sensual simplicity of a space when used within an appropriate color scheme. This is a timeless beauty that allows unlimited design.



Ultramarine
SU067

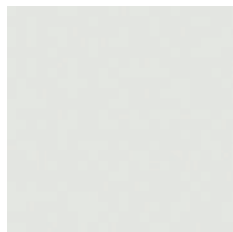


Forest
SFO61

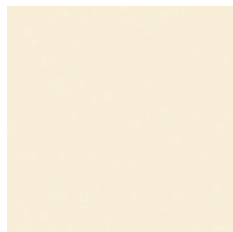


Piano Black
GP790

Solid



Fog
SFO20



Ivory
SIO40



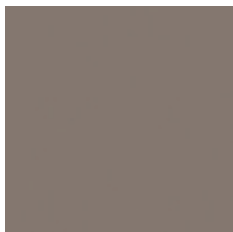
Sunflower(N)
SSO42



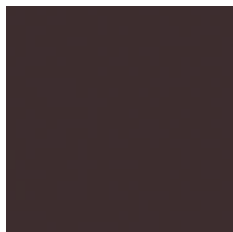
California Poppy(N)
SCO52



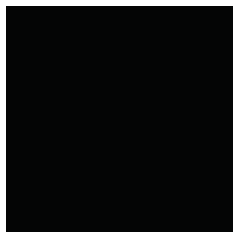
Univers(N)
SUO53



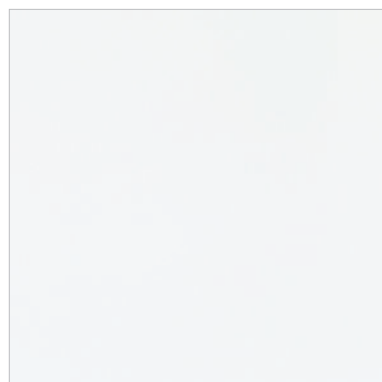
Serene
SSO23



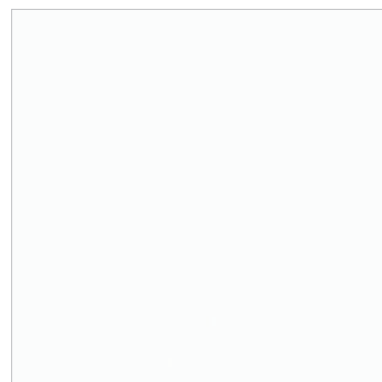
Iris
SIO56



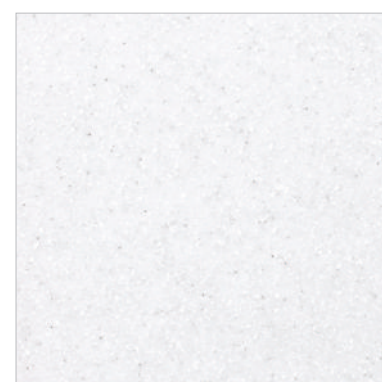
Onyx
ONO95



Comodo White GC120



Bright White BW010

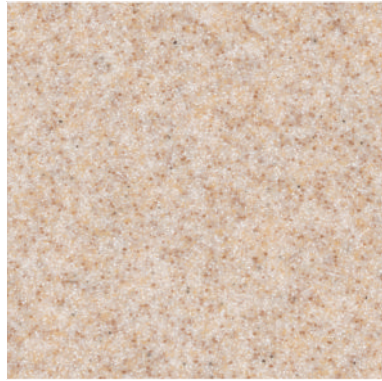


Aspen Snow AS610



Sanded White Pepper WP410

Exterior wall Cladding



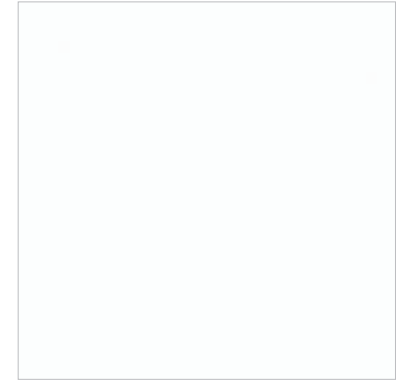
Sanded Vermillion SV430



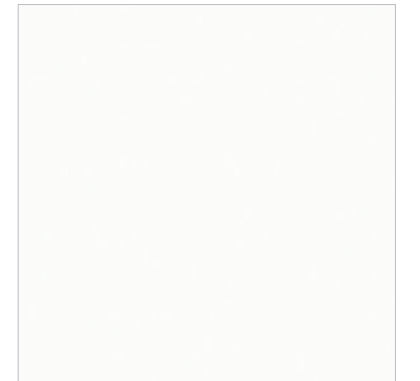
Sanded Sahara SS440



Sanded Papyrus SP474



Pearl SP011



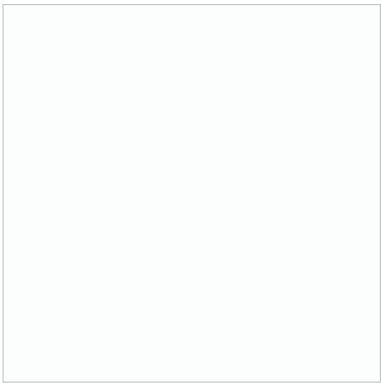
Pure white SP016



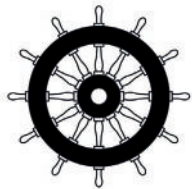
Interior wall
Cladding



Flame
Retardant



Pharos GP111



IMO Certified Staron® Product

Staron® Pharos holds MED (Marine Equipment Directive) certification in accordance with IMO (International Maritime Organization) regulations. While most shipbuilding materials are sensitive to heat and fire, Staron® Pharos meets both flammability requirements and high aesthetic demands.

Test	Result
Max. Gas Smoke Density	Pass (49.8Dm)
Toxic Gas Generation	Pass (273ppm of CO only)





Ultra Bright MU010



Limpio ML612

Ultra-Hygienic Material Solution for Healthcare

evermoin®

The healthiest choice for your design

evermoin® Ultra-Hygienic material/surface from staron® can be applied to almost any interior space within a healthcare facility. Imagine casework, work-stations and wall-cladding in a functional and renewable material that is durable as well as ultra-hygienic. Achieve the perfect blend of simplicity in design in an Ultra-Hygienic material surface engineered for a healthier life.



Benefit of evermoin®



Speedy ultra-hygienic effect and action on representative bacteria and fungi

Excellent Ultra-Hygienic retention and Confirm quality stability and durability

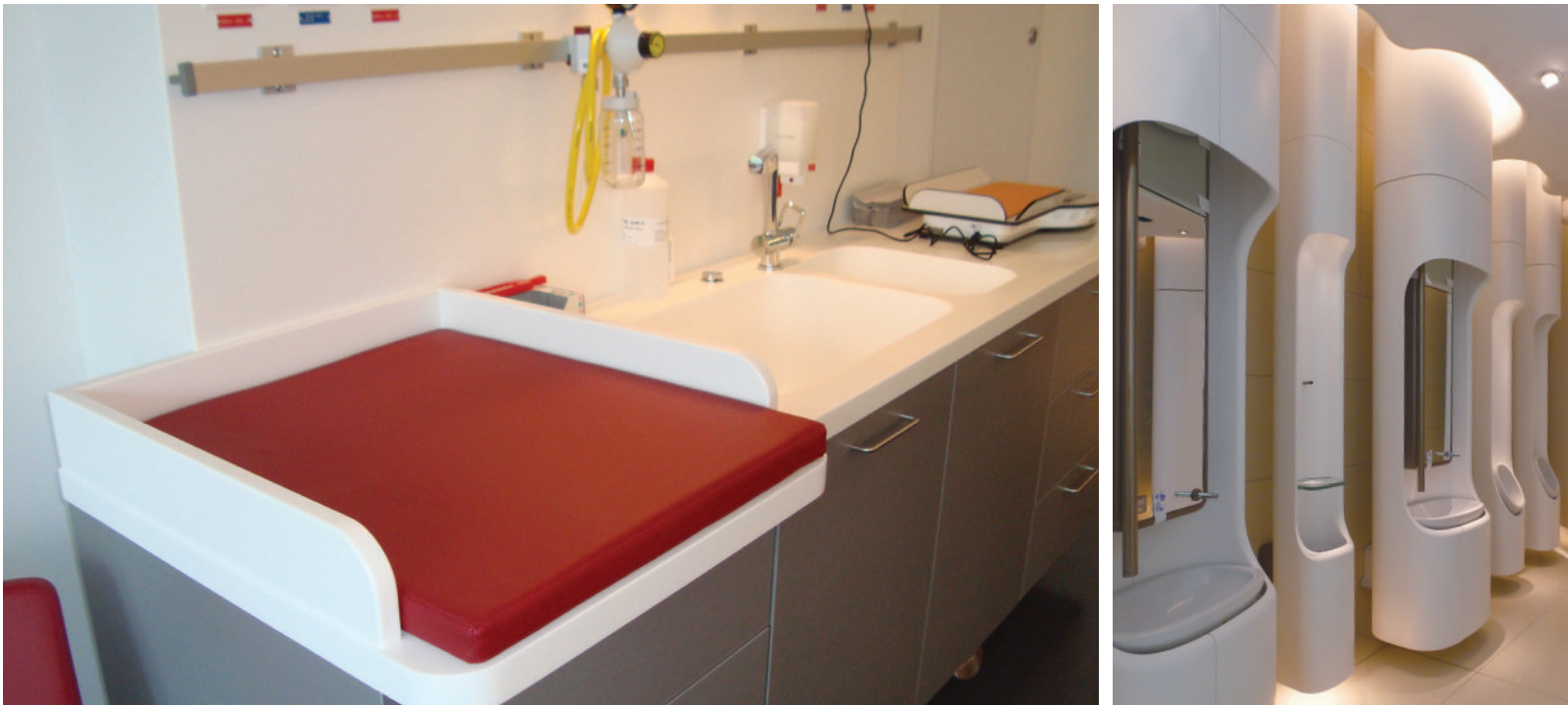
Material certification harmless to human body and environment (EPA, NSF, FDA)

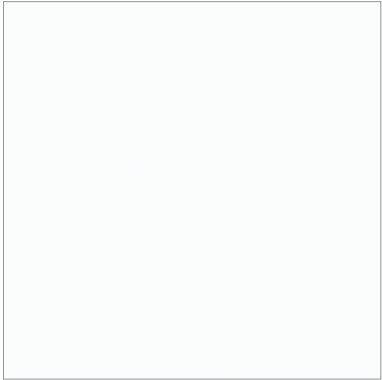
Achieved SCS RECYCLED CONTENT CERTIFICATION which demonstrates our commitment to conserving natural resources. [SCS Recycle 6%]

Safety Properties

Obtained certification that guarantees sanitary safety and reliability harmless to the human environment such as Japan SIAA and US NSF and FDA.

Harmless to human body			Safe for food contact	Eco-friendly
				
SIAA Society of International sustaining growth for Ultra-Hygienic Articles	EPA US Environmental Protection Agency	FDA US Food & Drug Administration	NSF National Sanitation Foundation	Eco-Friendly SCS Global Services





Infinity IF188

Dramatic Curves & Design

- Minimum Radius : 0mm
- Staron® Super Flex boasts superior thermoplastic capabilities that can create limitless possibilities of shapes and designs from the slightest curves to extreme bends.

High Elongation

- The elongation rate of Staron® Super Flex is two times higher than that of existing Staron®.
- Staron® Super Flex can be used for architectural and interior applications, such as high-performance wall-cladding or kitchen, bathroom and furniture surfaces.

Time Reduction

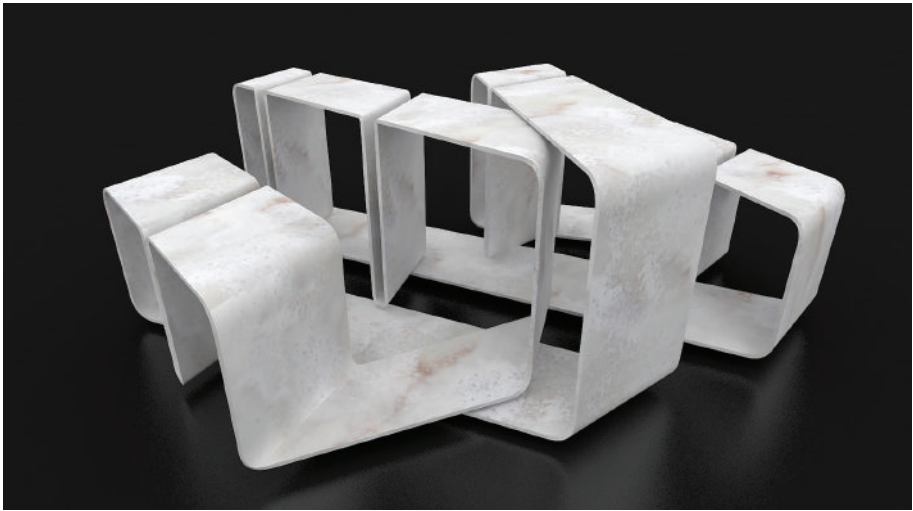
- Staron® Super Flex can be thermoformed at lower temperature and in shorter heating time compared to the thermoforming process of existing Staron®.

Product	Oven Temp.
Staron Solid (12T)	302° (150°)
Staron Infinity (12T)	284° (140°) 302° (150°)

Time	Folding limit (Radius)
45~80 min	2" (50mm)
20~30 min 15~30 min	0" (0mm)

Cautions for Processing

- Please note that variations in heating time and temperature conditions depending on the oven equipment. The table above shows the thermoforming conditions using convection ovens.
- Thermoforming time is shorter when using platen ovens.
- Thermoforming at temperatures above 180° can lead to decreased performance.
- Damage on Staron® Super Flex sheet can occur at temperatures above 185° . (using convection ovens)



COLORS OF STARON

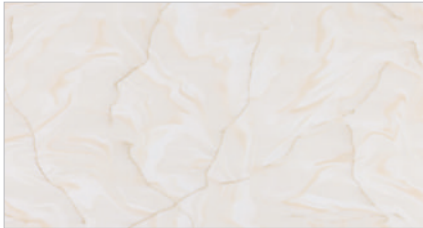
SUPREME



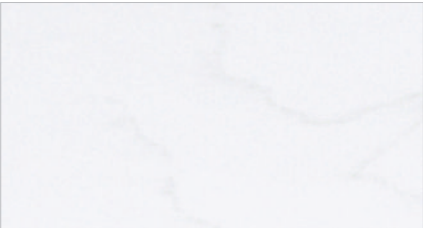
NEW Arctic White VA311



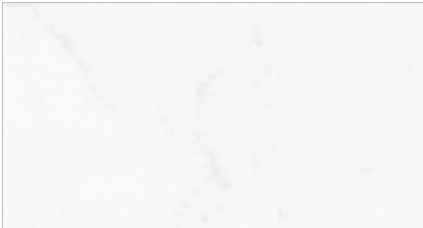
NEW Rotor Cloud VR322



NEW Latte Cream VL343



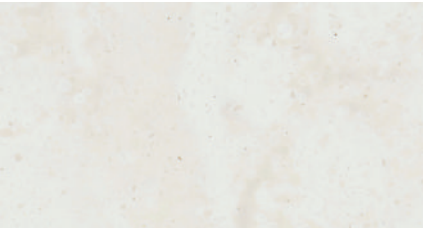
Cotton White VC110



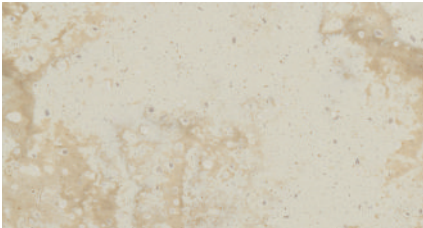
Morning Sky VM114



Beige Granite VB172



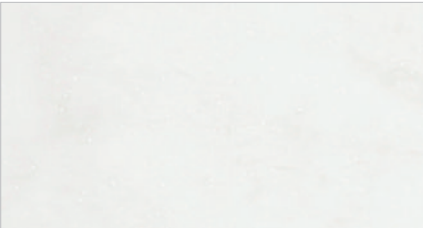
Magnolia VM143



Dandelion VD175



Delphi VD111



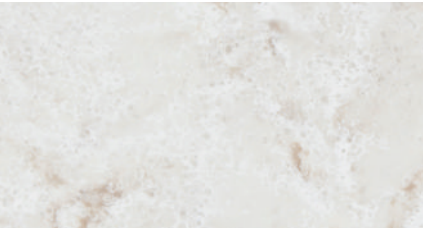
Tranquil VT115



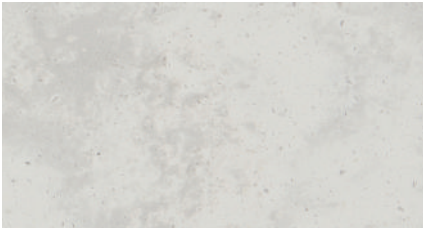
Reno VR184



Cloudbank VC118



Ocean View VO171



Dawn VD126



Urban Grey VU127



Ash Concrete VA129



Flux VF113



Natural Bridge VN144



Loam VL155



Noir Concrete VN180

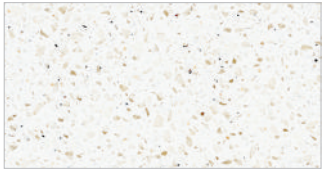
TEMPEST



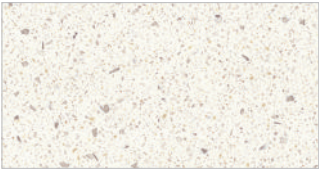
Meteor FM111



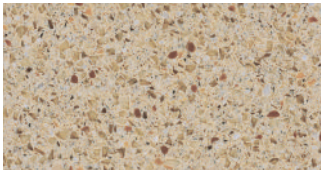
Coconut FC112



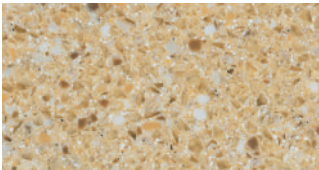
Twilight FT113



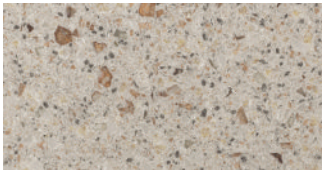
Bamboo FB173



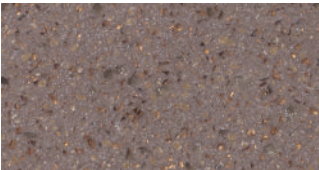
Caraway FC155



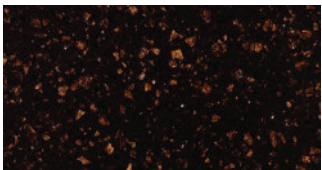
Rattan FR124



Glimmer FG144

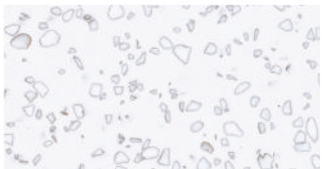


Bronzestar FB154

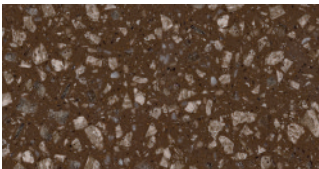


Radiance(Shimmer) FR148

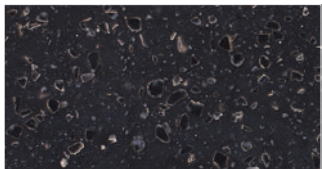
QUARRY



Mosaic Dalmatian QD212

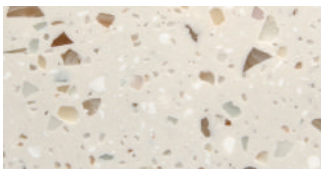


Earthen Bark QL257

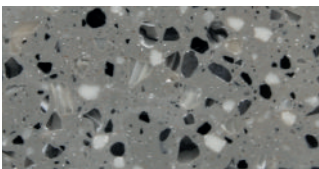


Mosaic Nimbus Qn287

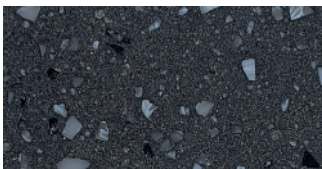
TERRAZZO



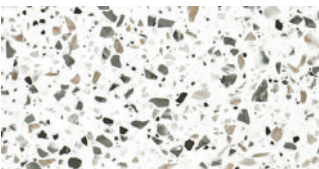
NEW Terrazzo Bologna NT970



NEW Terrazzo Torino NT981



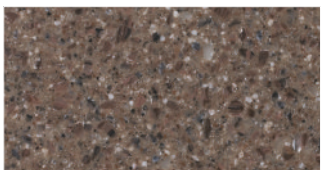
NEW Terrazzo Como FT191



Terrazzo Venezia NT150

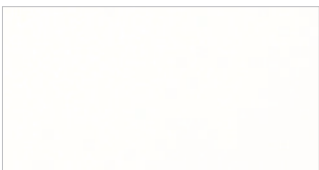


CRYSTAL

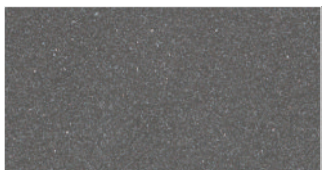


Crystal Sundance NS955

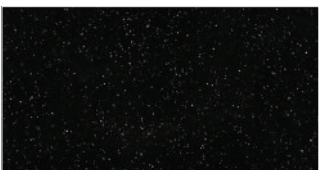
METALLIC



Metallic Yukon EY510



Metallic Sleeksilver(N) ES582



Metallic Atrous EA599

SOLID



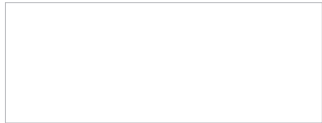
NEW Ultramarine SU067



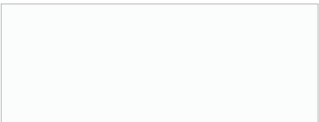
NEW Forest SFO61



NEW Piano Black GP790



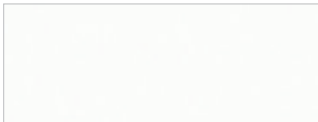
Dazzling White SD001



Bright White BW010



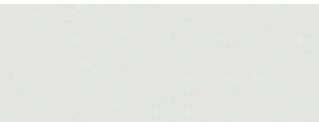
Pearl SP011



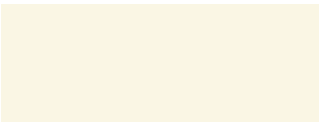
Pure white SP016



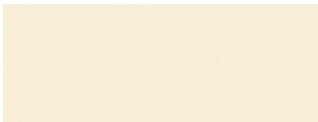
Quasar White SQ019



Fog SFO20



Natural SVO41



Ivory SIO40



Sunflower(N) SS042



California Poppy(N) SC052



Univers(N) SU053



Serene SS023

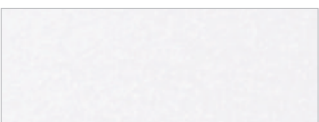


Iris SIO56



Onyx ON095

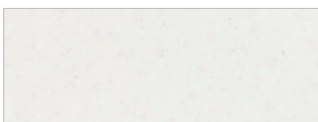
SANDED



Sanded Icicle SI414



Sanded Dover SD413



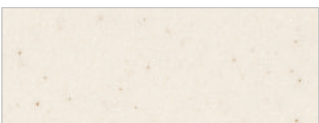
Sanded Cream SM421



Sanded Birch SB412



Sanded White Pepper WP410



Sanded Linen SL443



Sanded Sahara SS440



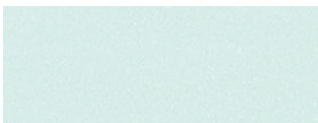
Sanded Gold Dust SG441



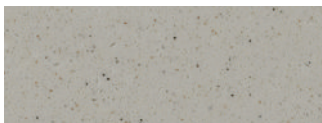
Sanded Papyrus SP474



Sanded Vermillion SV430

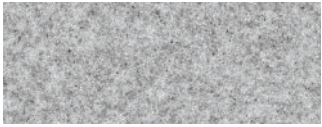


Sanded Mint SM463

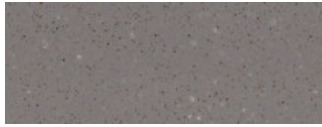


Sanded Heron SH428

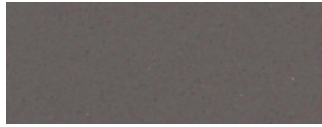




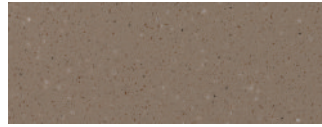
Sanded Grey SG420



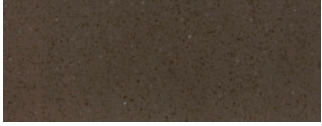
Sanded Tundra ST482



Sanded Taupe ST486



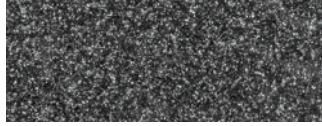
Sanded Clay SC475



Sanded Chestnut SC457



Sanded Mocha SM453



Sanded Dark Nebula DN421



Sanded Onyx SO423

ASPEN



Aspen Glacier AG612



Aspen Eggshell AE642



Aspen Snow AS610



Aspen Iceberg AI612



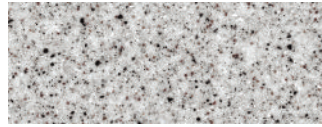
Aspen Glow AG636



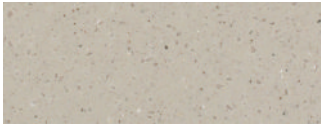
Aspen Lily AL645



Aspen Alder AA625



Aspen Grey AG620



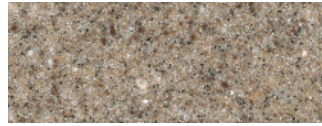
Aspen Cliff AC652



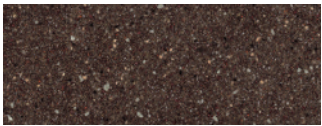
Aspen Misto AM681



Aspen Concrete AC629



Aspen Brown AB632



Aspen Mine AM633

PEBBLE



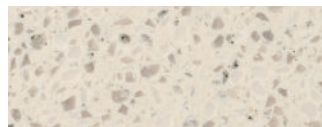
NEW Pebble Chiffon PC842



NEW Collina chai PC829



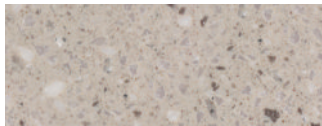
Pebble Moon PM832



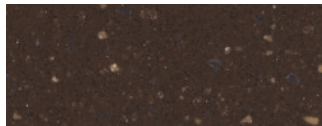
Pebble Fresco PF844



Pebble Gold PG840



Collina Mirage PM879



Pebble Terrain PT857

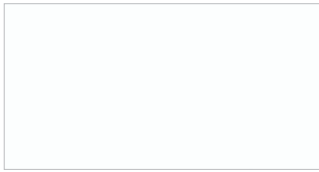


Pebble Chocolate PC855

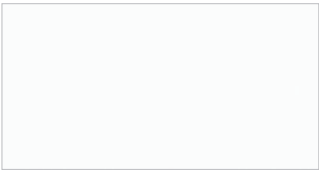
FLAME RETARDANT

SUPER FLEX

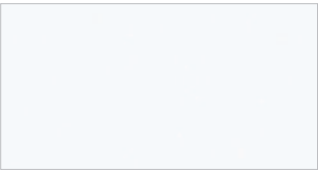
EVERMOIN(ANTIMICROBIAL)



Pharos GP111



Infinity IF188

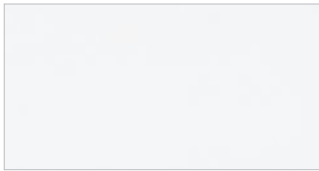


Ultra Bright MU010



Limpio ML612

SELF-CLEANING



NEW Comodo White GC120

Eco-Friendly Materials, Staron

Printed representation of colors may vary from actual samples.
Please review actual sample prior to selection.
• To view new colors in greater detail, please visit www.staron.com

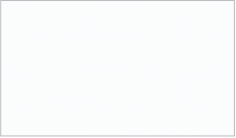
- Translucent
- Exterior Material
- Self Cleaning
- Super Flex
- Antimicrobial
- Flame Retardant
- Eco-Friendly



SINKS & BOWLS

Staron solid surface sinks and bowls are installed with the all-acrylic sheet in a seamless appearance for a smooth and polished fit. The continuous transition from sink to surface leaves no seams for bacteria or mold to accumulate and grow, thus Staron’s non-porous solid surfaces are the most desirable choice for hygienic interior commercial applications. Staron sinks come in five following colors in ten popular models:

COLOR OPTIONS


Bright White BW010


Pearl SPO11

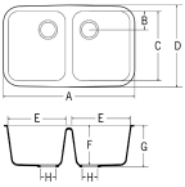

Ivory SIO40


Pure white SPO16


Quasar White SQ019

KITCHEN / UTILITY SINKS

A2311



A 31.25in (794mm)

B 4.33in (110mm)

C 16.57in (421mm)

D 18.93in (481mm)

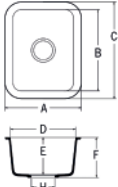
E 13.70in (348mm)

F 9.25in (235mm)

G 9.84in (250mm)

H 3.54in (90mm)

A1121



A 12.83in (326mm)

B 14.01in (356mm)

C 16.37in (416mm)

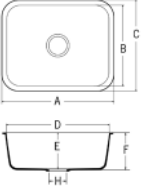
D 10.47in (266mm)

E 6.49in (165mm)

F 7.08in (180mm)

H 3.54in (90mm)

A1231



A 23.30in (592mm)

B 16.61in (422mm)

C 18.97in (482mm)

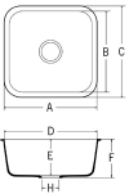
D 20.94in (532mm)

E 7.36in (187mm)

F 7.95in (202mm)

H 3.54in (90mm)

A1181



A 18.11in (460mm)

B 15.75in (400mm)

C 18.11in (460mm)

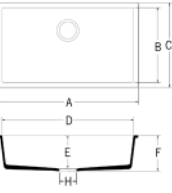
D 15.75in (400mm)

E 8.18in (208mm)

F 8.85in (225mm)

H 3.54in (90mm)

B3290



A 29.52in (750mm)

B 15.75in (400mm)

C 17.64in (450mm)

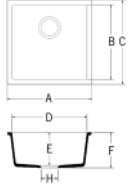
D 27.48in (700mm)

E 7.28in (185mm)

F 7.87in (200mm)

H 3.54in (90mm)

B3180



A 17.67in (450mm)

B 15.75in (400mm)

C 17.67in (450mm)

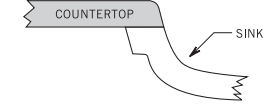
D 15.75in (400mm)

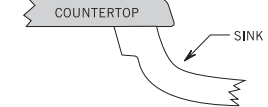
E 6.89in (175mm)

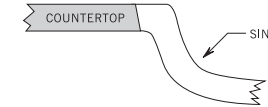
F 7.48in (190mm)

H 3.54in (90mm)

MOUNTING OPTIONS

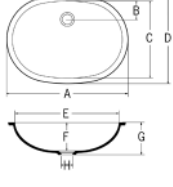
**Seam mount**

**Under mount**

**Angled mount**

LAVATORY SINKS / BASINS

A3211



A 21.57in (548mm)

B 3.38in (86mm)

C 14.01in (356mm)

D 15.59in (396mm)

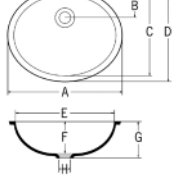
E 20.00in (508mm)

F 6.14in (156mm)

G 6.81in (173mm)

H 1.77in (45mm)

A3181



A 18.18in (462mm)

B 3.70in (94mm)

C 13.22in (336mm)

D 14.80in (376mm)

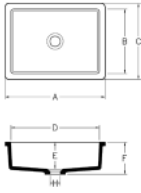
E 16.61in (422mm)

F 5.47in (139mm)

G 6.14in (156mm)

H 1.77in (45mm)

B3150



A 16.81in (427mm)

B 10.94in (278mm)

C 12.87in (327mm)

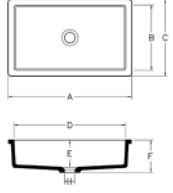
D 14.88in (378mm)

E 4.57in (116mm)

F 5.43in (138mm)

H 1.77in (45mm)

B3190



A 20.63in (524mm)

B 10.79in (274mm)

C 12.87in (327mm)

D 18.66in (474mm)

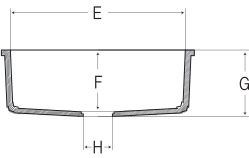
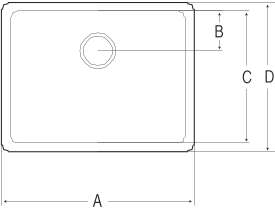
E 4.57in (116mm)

F 5.43in (138mm)

H 1.77in (45mm)

NEW

B1212



A 22.87in (581mm)

B 4.8in (122mm)

C 15.74in (400mm)

D 17.75in (451mm)

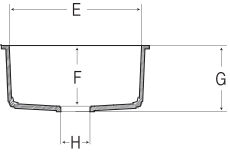
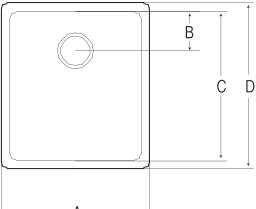
E 20.86in (530mm)

F 7.28in (185mm)

G 7.87in (200mm)

H 3.54in (90mm)

B1177



A 17.71in (450mm)

B 4.72in (120mm)

C 17.71in (450mm)

D 19.68in (500mm)

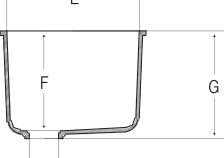
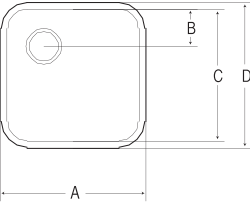
E 15.74in (400mm)

F 7.28in (185mm)

G 7.87in (200mm)

H 3.54in (90mm)

B1160



A 17.32in (440mm)

B 4.4in (112mm)

C 15.74in (400mm)

D 17.32in (440mm)

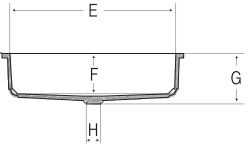
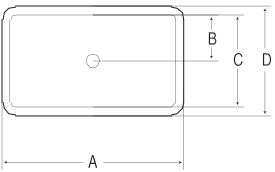
E 15.74in (400mm)

F 11.81in (300mm)

G 12.79in (325mm)

H 3.54in (90mm)

B3200



A 21.65in (550mm)

B 5.51in (140mm)

C 11.02in (280mm)

D 12.99in (330mm)

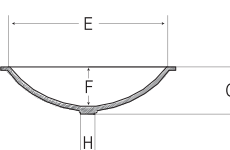
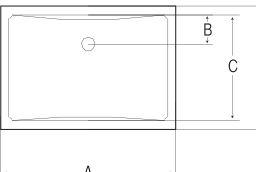
E 19.68in (500mm)

F 4.72in (120mm)

G 5.51in (140mm)

H 1.73in (44mm)

B3192



A 20.86in (530mm)

B 3.5in (89mm)

C 12.59in (320mm)

D 14.56in (370mm)

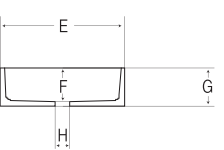
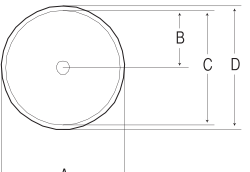
E 18.89in (480mm)

F 4.76in (121mm)

G 5.55in (141mm)

H 1.73in (44mm)

A3148



A 14.8in (376mm)

B 6.88in (175mm)

C 13.77in (350mm)

D 14.8in (376mm)

E 13.77in (350mm)

F 3.81in (97mm)

G 4.52in (115mm)

H 1.73in (44mm)

PERFORMANCE PROPERTIES

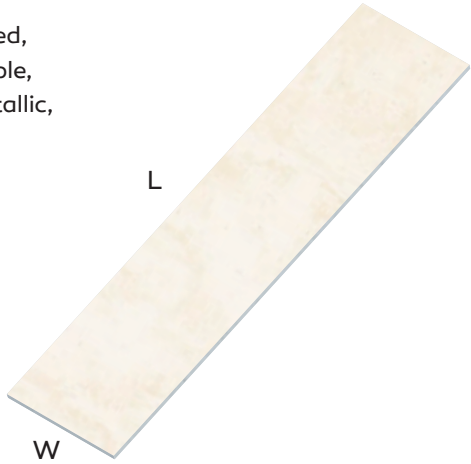
The information contained herein is provided by LOTTE CHEMICAL Co., Ltd. and subsidiaries and affiliates for information purposes only and should be used by individuals with technical experience and knowledge in the area. LOTTE CHEMICAL does not make any representation or warranties of the usefulness or expected result of the information, and does not assume any responsibility whatsoever related to the use of the information. Exclusion of the implied warranties may not apply in certain jurisdictions.

PROPERTY	TEST RESULT	TEST PROCEDURE
Tensile strength	6,000 psi	ASTM D 638
Tensile modulus	600,000 psi	ASTM D 638
Flexural strength	10,000 psi	ASTM D 790
Flexural modulus	1,000,000 psi	ASTM D 790
Elongation	0.5%	ASTM D 638
Hardness	92 Rockwell “M” Scale 65 Barcol impressor	ASTM D 785 ASTM D 2583
Thermal expansion	2.0x1.0 ⁻⁵ in/in F°	ASTM D 696
Gloss (60 Gardner)	Between 5-20	NEMA LD-3
Color stability	No change-200hrs	NEMA LD-3
Stain resistance	Passed Rating 41	ANSIZ 124
Abrasion resistance	Passed	ANSIZ 124
Boiling water surface resistance	No effect	NEMA LD-3
High temperature resistance	No effect	NEMA LD-3
IZON Impact resistance (Notched)	0.28ft. lbf/in	ASTM D 256
Ball drop 1/2” (12 mm) sheet	144”w/1/2lb ball No failure	NEMA LD-3
Fungi and Bacterial resistance	No growth	ASTM G 21, G22
Specific gravity Solid colors Pattereded colors	1.72 1.69	ASTM D 792
Water absorption	0.04%, (1/2”, 24hrs) 0.11%, (1/8”, 24hrs)	ASTM D 570
Flammability Flame spread Smoke density	Class A/Class 1 10 10	UBC 8-1 ASTM E 84 ASTM E 84
Radiant heat resistance	No visual effect	NEMA LD-3
Toxicity	84.4g (Solid color) 81.8g (Patterned color)	Pittsburgh test protocol (LC50 Test)

PRODUCT DIMENSIONS

COLLECTION

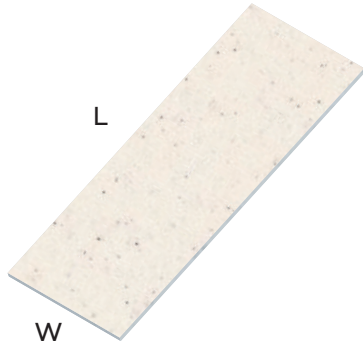
Solid, Sanded,
Aspen, Pebble,
Quarry, Metallic,
Tempest,
Supreme



THICKNESS	WIDTH	LENGTH
mm	mm	mm
12 (1/2")	760 (30")	3,680 (145")

COLLECTION

Solid, Sanded,
Aspen, Metallic



THICKNESS	WIDTH	LENGTH
mm	mm	mm
6 (1/4")	760 (30")	2,500 (98")

- Bright White with wider widths is available. Widths of 1350mm and 930mm with the thickness of 6mm, 9mm and 12mm are available.
- Panel thicknesses of 9mm and 19mm available on request.
- 6mm thickness sheet is not recommended for horizontal application.
- If there is a specific dimension or size that is required for a particular project, please consult with the local agent or distributor.

STARON® 10-YEAR LIMITED WARRANTY

The 10-year warranty applies to Staron, Tempest and Supreme Collection products that have been installed in an interior, commercial-use or residential application.

For more details, please consult with your Staron products distributor, or visit www.staron.com

DISCLAIMER

The information contained herein is provided by LOTTE CHEMICAL Co., Ltd. and LOTTE Chemical (Thailand) Co., Ltd. for information purposes only and should be used by individuals with technical experience and knowledge in the area. LOTTE CHEMICAL Co., Ltd. does not make any representation or warranties of the usefulness or expected result of the information, and does not assume any responsibility whatsoever related to the use of the information. Exclusion of the implied warranties may not apply in certain jurisdictions. LOTTE Chemical (Thailand) Co., Ltd. is a subsidiary of LOTTE CHEMICAL Co., Ltd.